

# HOW DEEP IS YOUR LOVE

BEE GEES

①

A C#m7 Bm7 F#m7 Bm7 C#m7 D6/E

The first system of guitar tablature consists of two staves. The first staff shows a sequence of chords: A, C#m7, Bm7, F#m7, Bm7, C#m7, and D6/E. The second staff contains the corresponding fret numbers and techniques, including a double bar line and various fingerings like (2), (3), (4), and (0).

A Bm7 F#m7

The second system of guitar tablature consists of two staves. The first staff shows chords: A, Bm7, and F#m7. The second staff contains the corresponding fret numbers and techniques, including a double bar line and various fingerings like (0), (2), (3), (4), and (5).

Bm7 D6/E Dmaj7 ② C#m7

The third system of guitar tablature consists of two staves. The first staff shows chords: Bm7, D6/E, Dmaj7, and C#m7. The second staff contains the corresponding fret numbers and techniques, including a double bar line and various fingerings like (0), (2), (3), (4), (5), (6), (7), and (8).

Bm7 G9 ③

The fourth system of guitar tablature consists of two staves. The first staff shows chords: Bm7 and G9. The second staff contains the corresponding fret numbers and techniques, including a double bar line and various fingerings like (0), (2), (3), (4), (5), (6), (7), and (8).

C#m7 ④ D6/E ⑤ A

The fifth system of guitar tablature consists of two staves. The first staff shows chords: C#m7, D6/E, and A. The second staff contains the corresponding fret numbers and techniques, including a double bar line and various fingerings like (0), (2), (3), (4), (5), (6), (7), and (8).

AmaJ7 ⑥ Dmaj7 Dm6 A Em/G

The sixth system of guitar tablature consists of two staves. The first staff shows chords: AmaJ7, Dmaj7, Dm6, A, and Em/G. The second staff contains the corresponding fret numbers and techniques, including a double bar line and various fingerings like (0), (2), (3), (4), (5), (6), (7), and (8).

Em/G ⑦ F#m7 Bm7 Dm6

The seventh system of guitar tablature consists of two staves. The first staff shows chords: Em/G, F#m7, Bm7, and Dm6. The second staff contains the corresponding fret numbers and techniques, including a double bar line and various fingerings like (0), (2), (3), (4), (5), (6), (7), and (8).

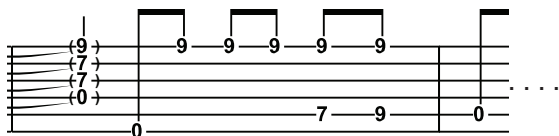
A C#m7 D6/E TO CHORUS

The eighth system of guitar tablature consists of two staves. The first staff shows chords: A, C#m7, and D6/E. The second staff contains the corresponding fret numbers and techniques, including a double bar line and various fingerings like (0), (2), (3), (4), (5), (6), (7), and (8).

# HOW DEEP IS YOUR LOVE

## LEFT HAND REMARKS

- ① Play the **A** chord barring the dgb-strings on the 2nd fret with your index finger. For the **C#m7** just add 3rd finger on A string and pinky on g string. The following **Bm7** at first only requires another plain barré on the 2nd fret. You can fret the full chord for the descending notes one beat later. That makes things easier.
- ①A The **C#7** is a plain C7 moved one fret up. Play the following d on b-string with the index finger.
- ② To be prepared for the high a in beat 3+ , play the **Dmaj7** with a barré on the 5th fret (all except low e-string).
- ③ The **G9** is played with the index (the a on g-string) and 3rd finger (g on low e string). For the c# on the b-string, just bend down your index finger down to form a small barré over g and b string. Sounds more complicated than it is.
- ④ During the **C#m7** you will find that you will have no spare finger left for the high a on beat 3+. Use the same technique as explained under "3". This time it is your 2nd finger that has to be bend.
- ⑤ Now that last bar of the verse is really tricky: while the falsetto voice sings „how deep is your love..“ the lower voice leads over to the chorus. In addition to what is noted on the tab sheet for the last two notes (either high or low) of this bar, there is indeed a third option, that goes like this:



Take the pinky for the high c#, the two lower notes are best played with index and third finger. Let the last note ring a little longer than noted.

- ⑥ The **Dmaj7** here is played barring the 2nd fret , pinky on a-string 5th fret and the ringfinger hammering on the f# on d-string.
- ⑦ At the **F#7** : to play the high g on the e-string, release the ringfinger immediately after plucking the f# on d-string (beat 3) and hit the high g.